

Year 5
Living things and
their habitats

Making new
plants





Aim

I can describe how some plants reproduce

Success Criteria

I can explain the difference between sexual and asexual reproduction.

I can identify the function of the parts of a flower.

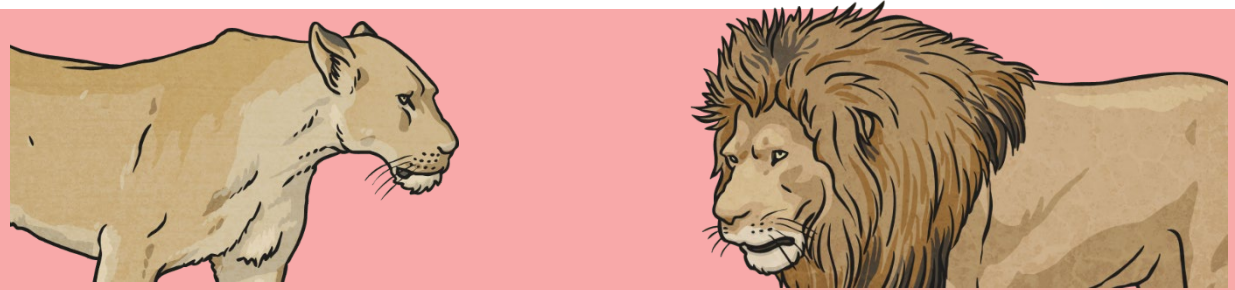
I can describe ways that plants are pollinated in order to reproduce

Reproduction

All living things need to make more of themselves so that their species does not die out.

Reproduction is the process by which new living things are made.

There are two types of reproduction: sexual and asexual.



Sexual reproduction requires two parents to make one offspring.



Asexual reproduction needs only one parent, which creates offspring that are exact copies of the parent.

Reproduction

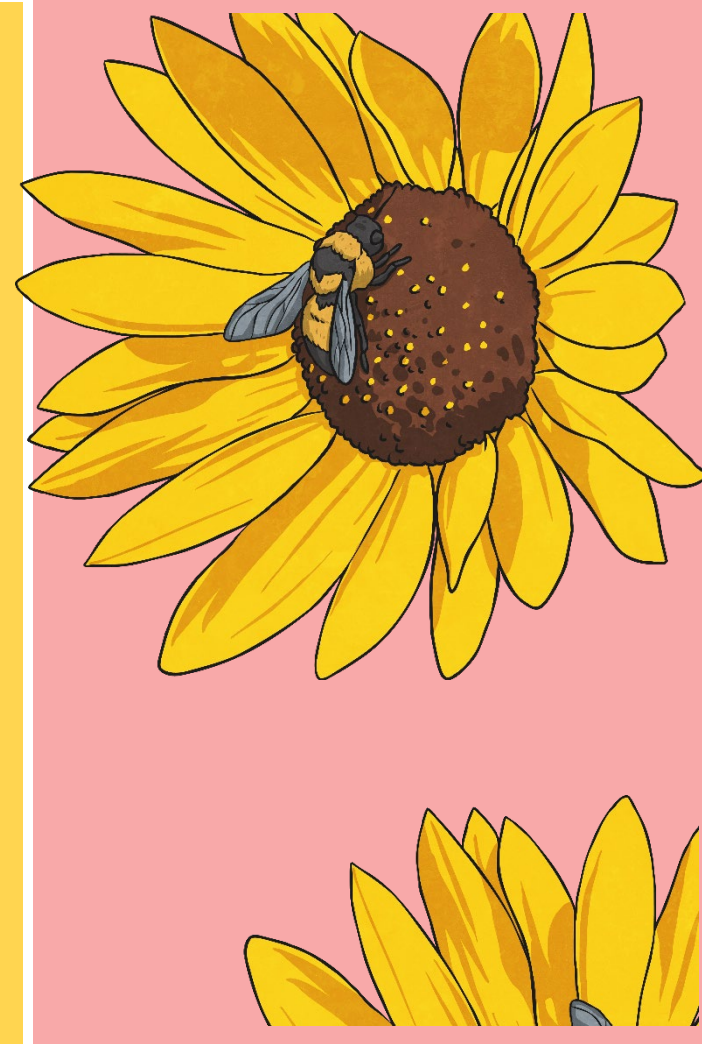
In this lesson, you will learn more about sexual reproduction in plants.

Living things that use sexual reproduction have sex cells called gametes. These are split into male gametes and female gametes. In some living things, the male and female are separate, but in other living things one organism contains both male and female gametes.

In plants, the male gametes are contained in the pollen and the female gametes are called ovules.

Sexual reproduction happens when a male gamete and a female gamete join. This is called fertilisation.

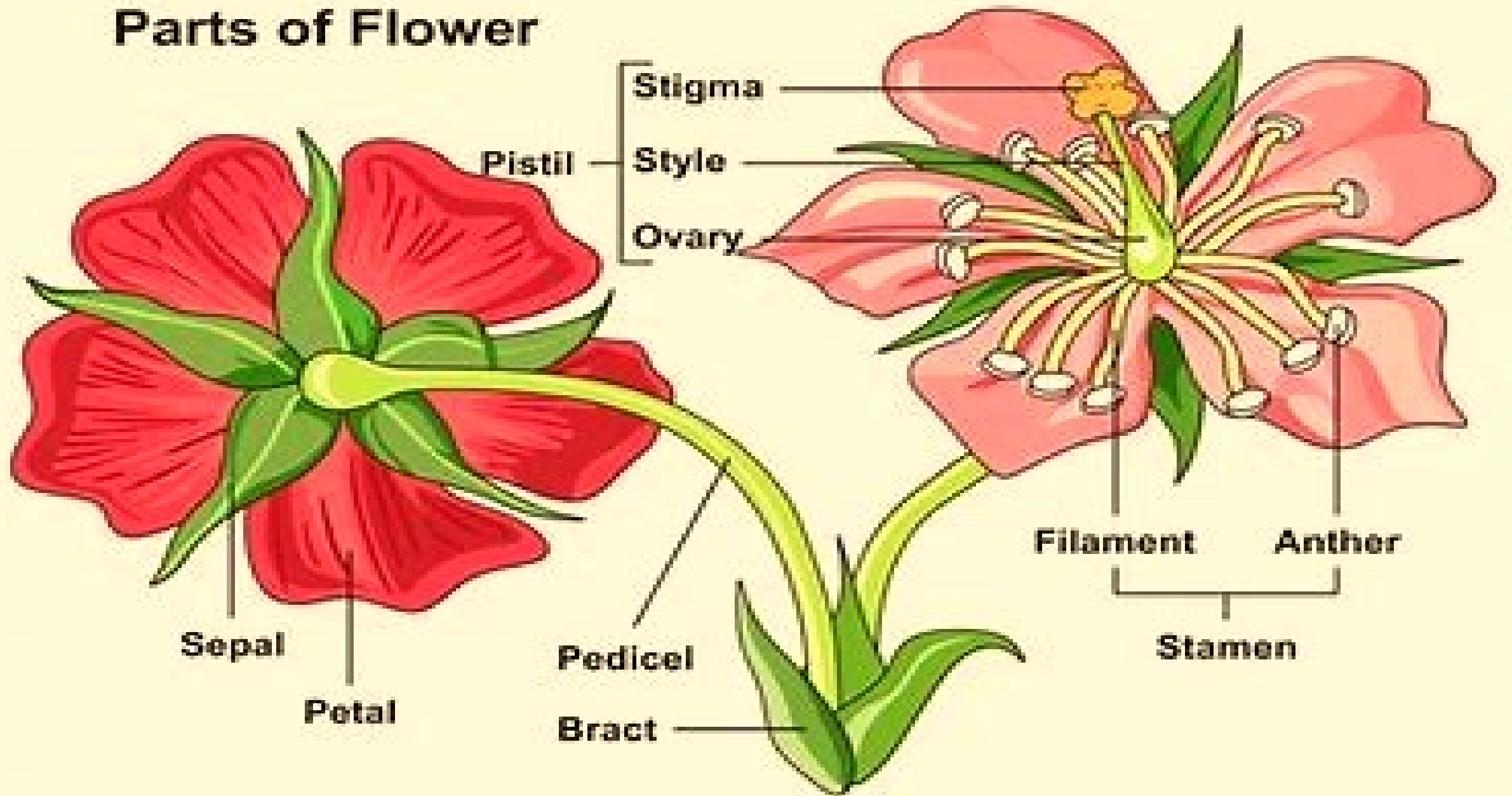
Sexual reproduction produces offspring that are similar to both parents, but not identical to either.



Description of flower parts

Stigma	The stigma is a female part of the flower. It is sticky so it can catch grains of pollen easily.
Style	A female part of the flower. Pollen travels down the style to the ovary.
Ovary	A female part of the flower. The ovary contains the ovules.
Ovule	The female gamete (sex cell). If an ovule fuses with a grain of pollen, a new seed will form.
Filament	A male part of the flower. The filament holds up the anther.
Anther	A male part of the flower. The anther makes the pollen, a fine yellow powder which contains the male gametes (sex cells).
Pollen Tube	This tube is formed to transport the male gametes from the pollen down the style to the ovary.
Stem	The stem supports the leaves and the flowers. It also transports water around the plant.
Petal	Petals are often brightly coloured or sweetly scented to attract insects.

Parts of Flower



Pollination – Insect or Wind

Which statements are true for flowers pollinated by the wind?

Stigma hangs outside the flower so it can catch pollen grains

Brightly coloured so they look attractive

Have long, dangling anthers that get blown around easily

Have feathery stigmas to catch pollen

Contains tasty nectar

Have large petals for insects to land on

Pollen is sticky so it attaches easily

Pollen grains are very small so they blow around easily

Have a strong scent so they smell attractive

Wind Pollination

Have long,
dangling anthers
that get blown
around easily

Pollen grains are
very small so they
blow around easily

Have feathery
stigmas to catch
pollen

Stigma hangs
outside the flower
so it can catch
pollen grains

Insect Pollination

Brightly coloured
so they look
attractive

Contains tasty
nectar

Pollen is sticky so
it attaches easily

Have large petals
for insects to land
on

Have a strong
scent so they smell
attractive