



Year 6

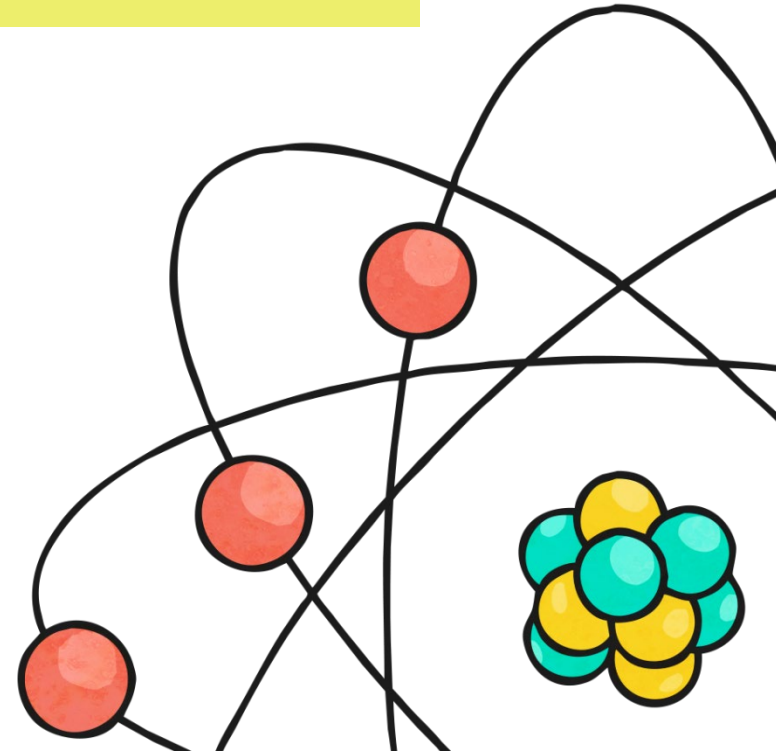
Electricity Quiz



# Electricity Quiz

**Are you an electricity expert?**

**Let's check!**



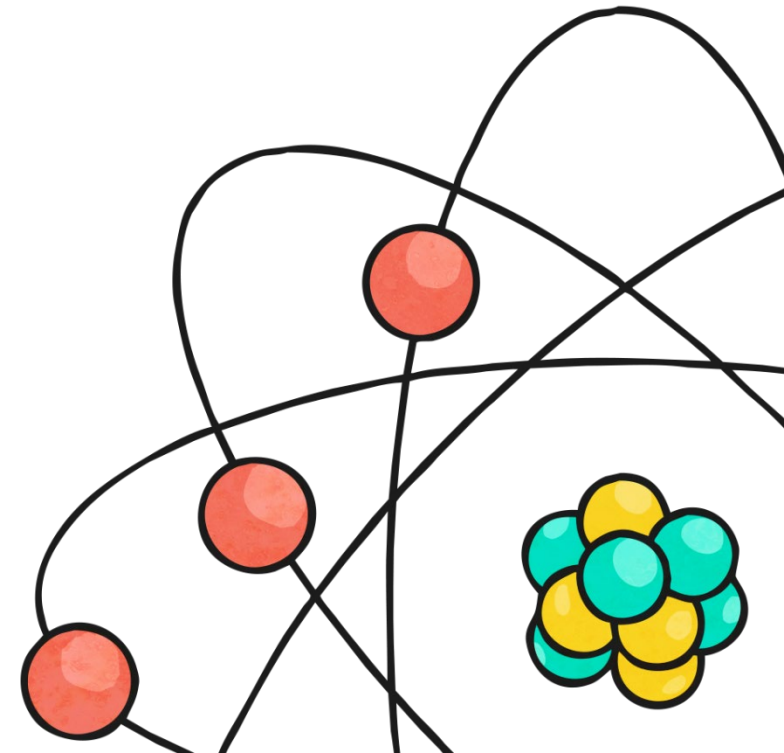
# Electricity Quiz

1. What is electricity?

a) something to make our lights turn on

b) a form of power

c) energy



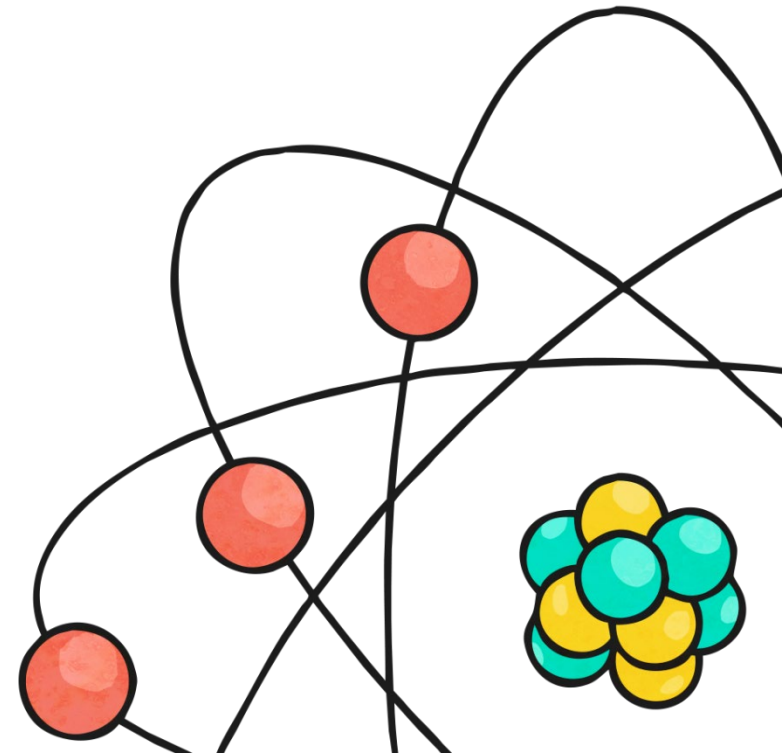
# Electricity Quiz

2. How is electric energy carried?

a) cables

b) on electrons

c) wires



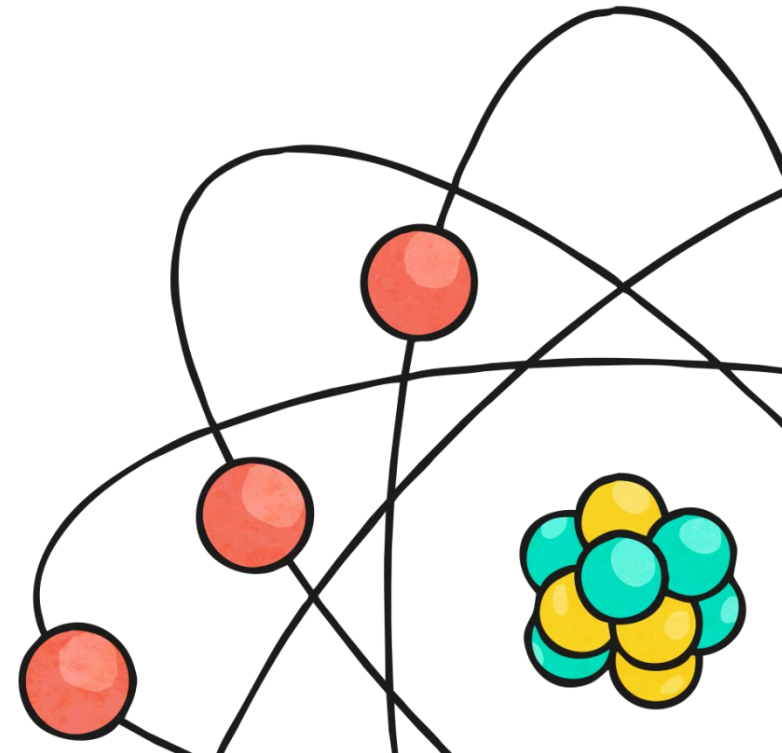
# Electricity Quiz

3. What is a circuit?

a) A pathway

b) A circular path that doesn't stop

c) A running track



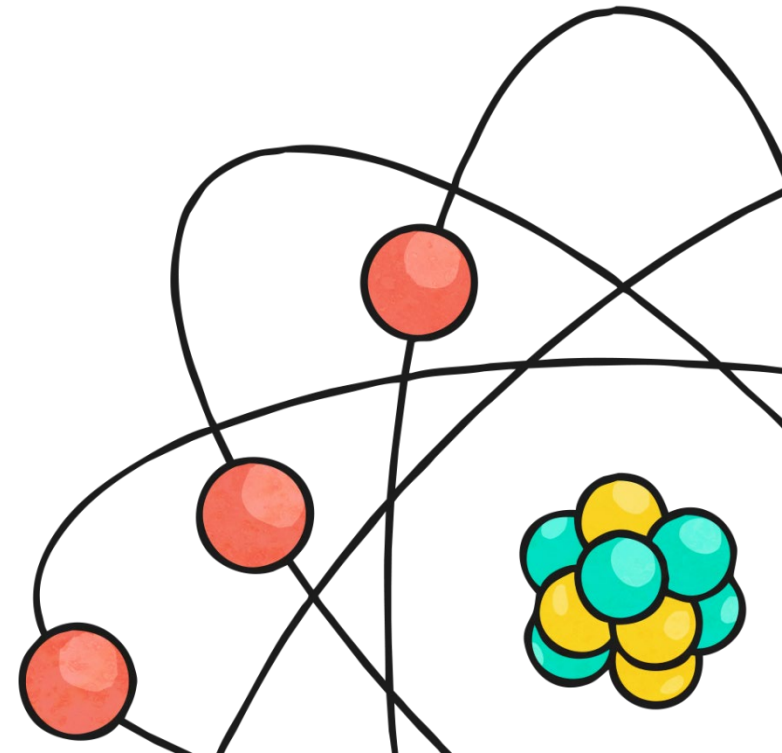
# Electricity Quiz

4. What is an open circuit?

a) A path that is not continuous

b) A light and a switch

c) A path that anyone can use



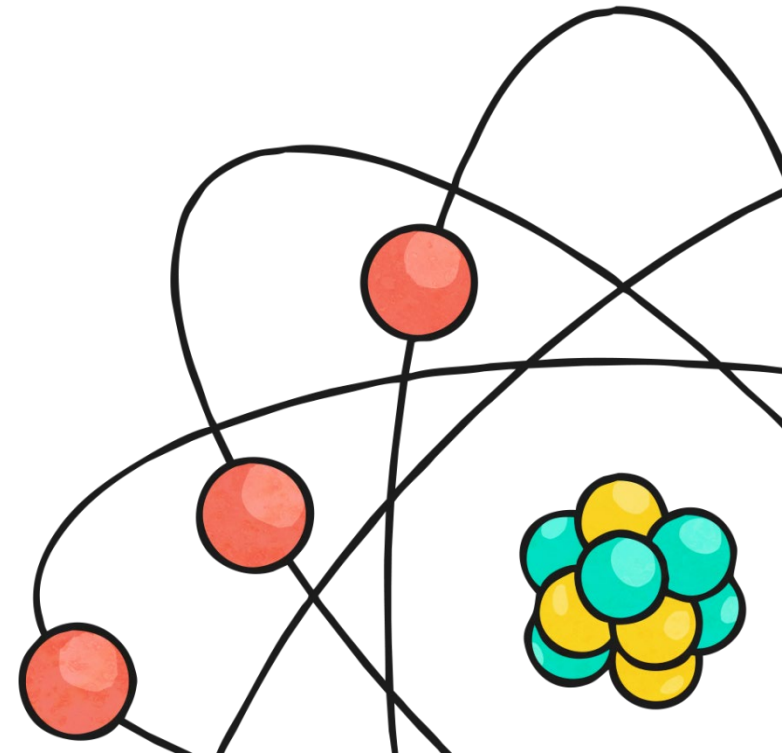
# Electricity Quiz

5. What do you need for a simple circuit?

a) cables, wires, bulbs and batteries

b) wires, bulbs, battery, and a switch

c) wires, bulb and battery



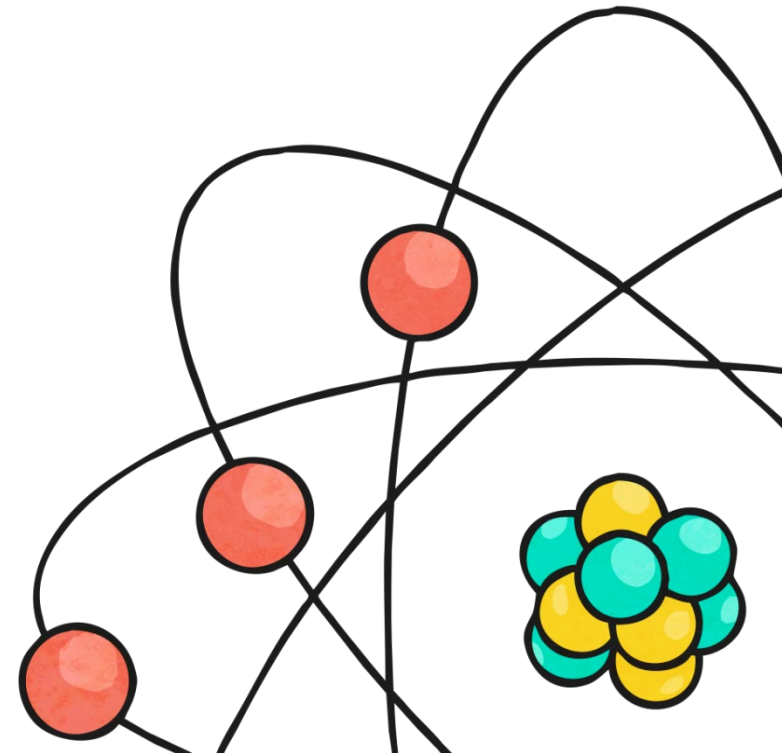
# Electricity Quiz

6. Something that allows electricity to pass is a:

a) wire

b) conductor

c) circuit



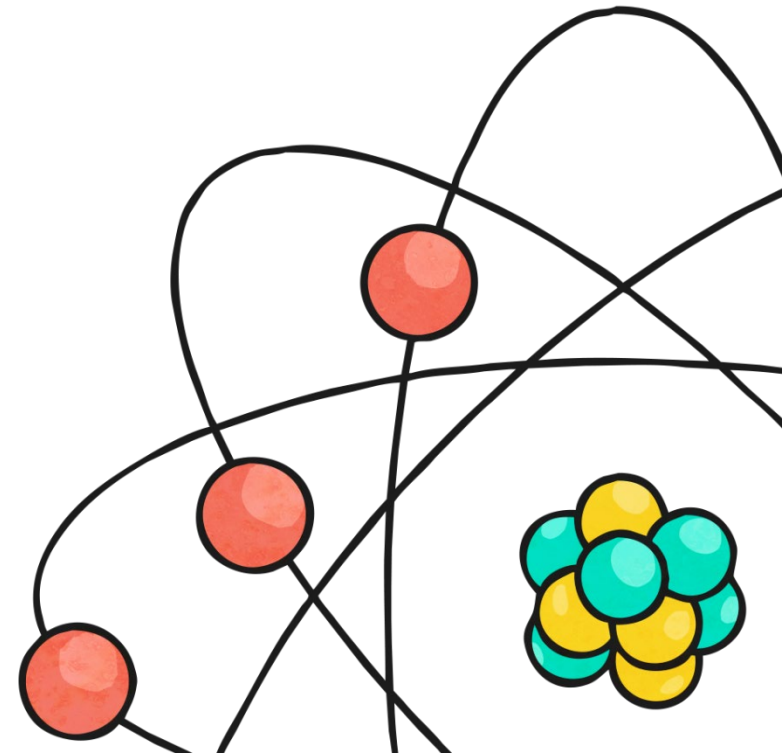
# Electricity Quiz

7. Something that doesn't allow electricity to pass is called:

a) An insulator

b) A switch

c) Wires



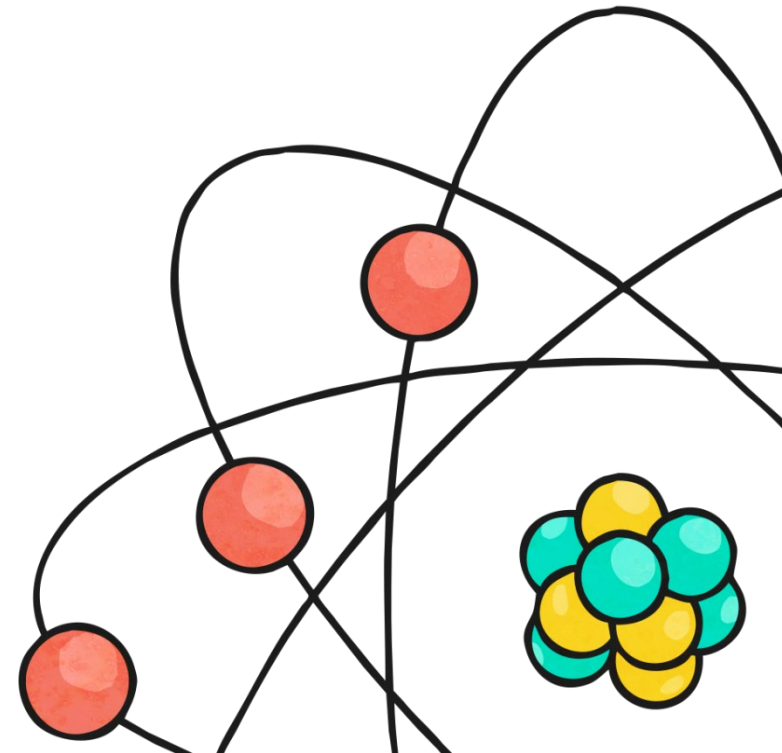
# Electricity Quiz

8. Which of the following does not conduct electricity?

a) wood

b) copper

c) water



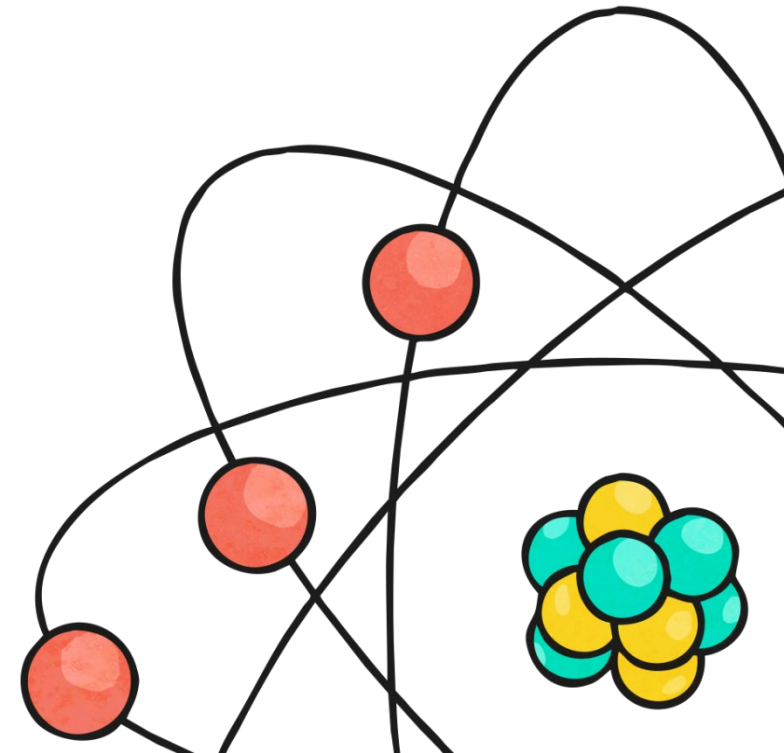
# Electricity Quiz

9. Which of the following does conduct electricity?

a) cotton

b) iron

c) wood



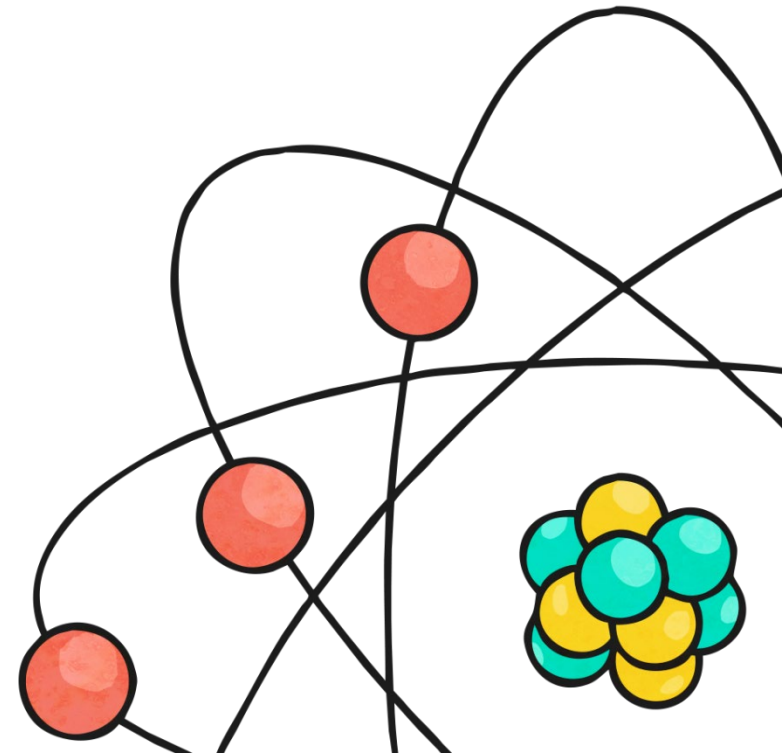
# Electricity Quiz

10. What do we call a circuit that does not work?

a) Complete circuit

b) Incomplete circuit

c) Broken circuit



# Answers

Questions	Answers
1	C
2	B
3	B
4	A
5	C
6	B
7	A
8	A
9	B
10	C

